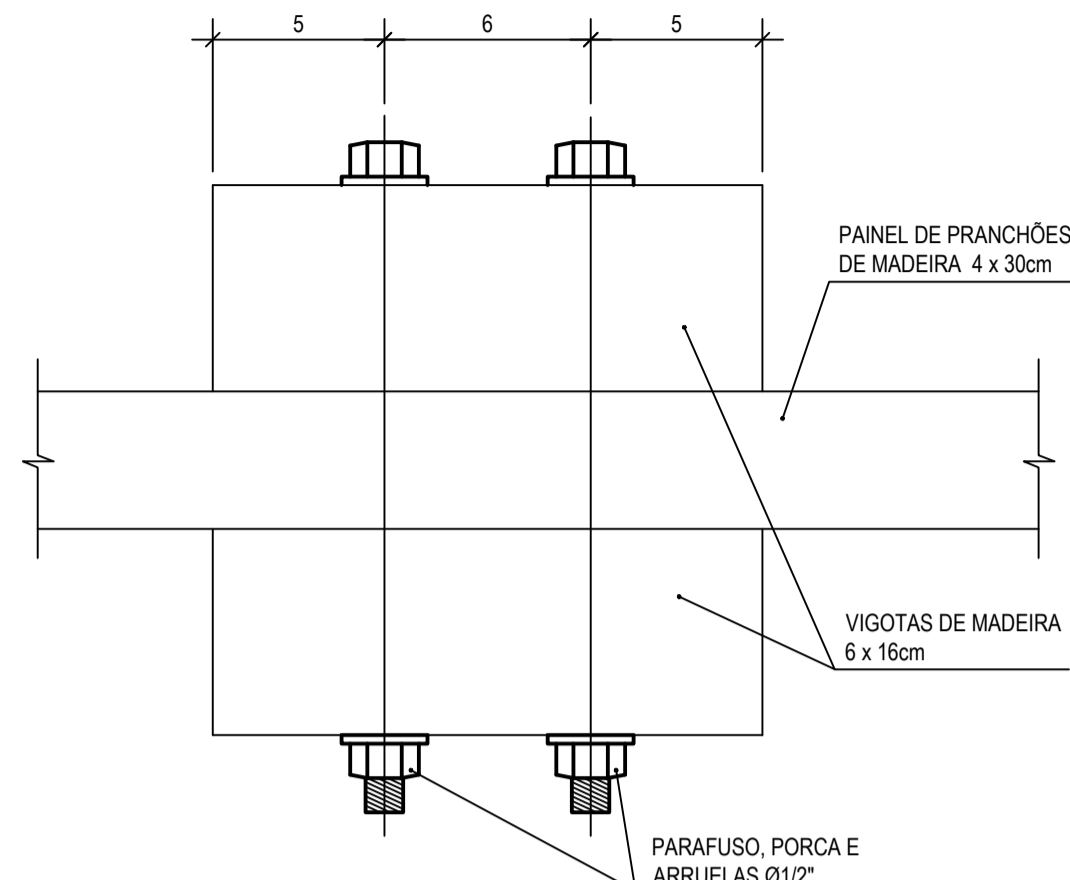
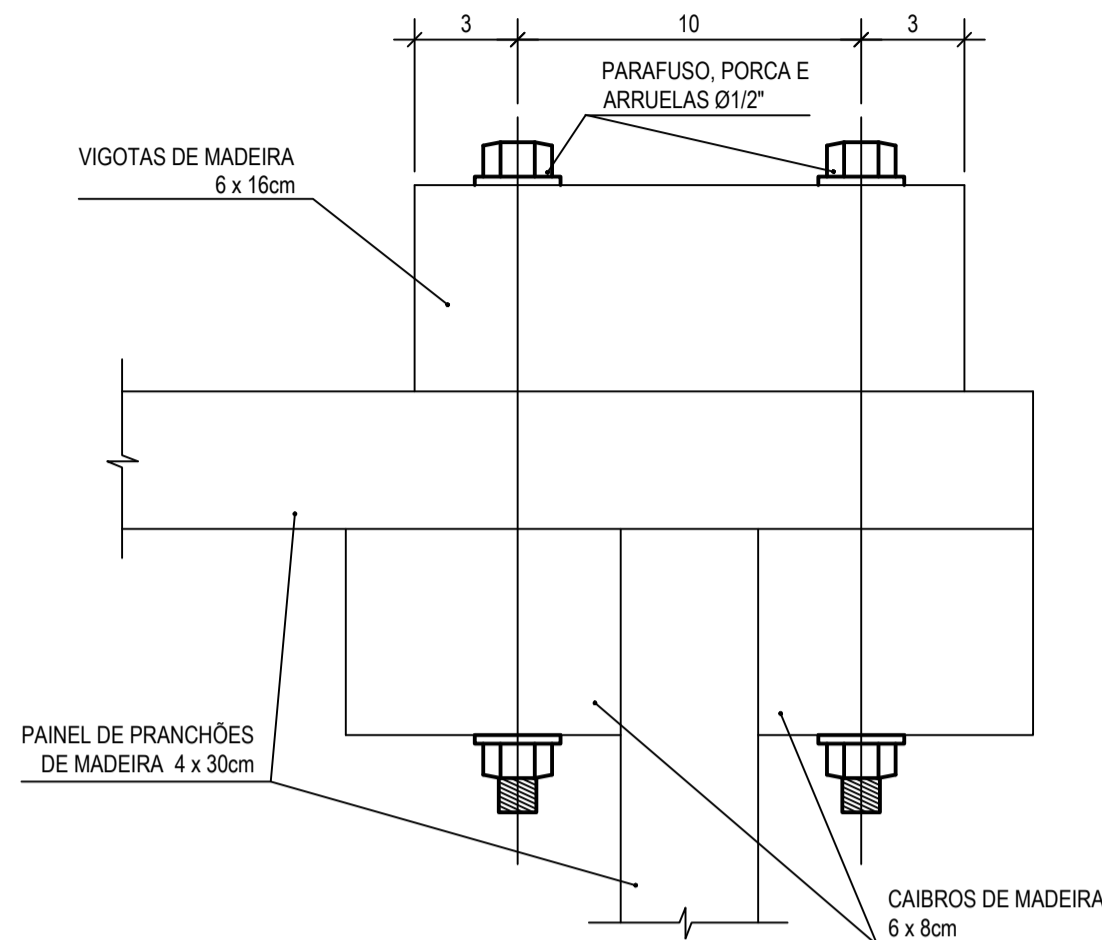


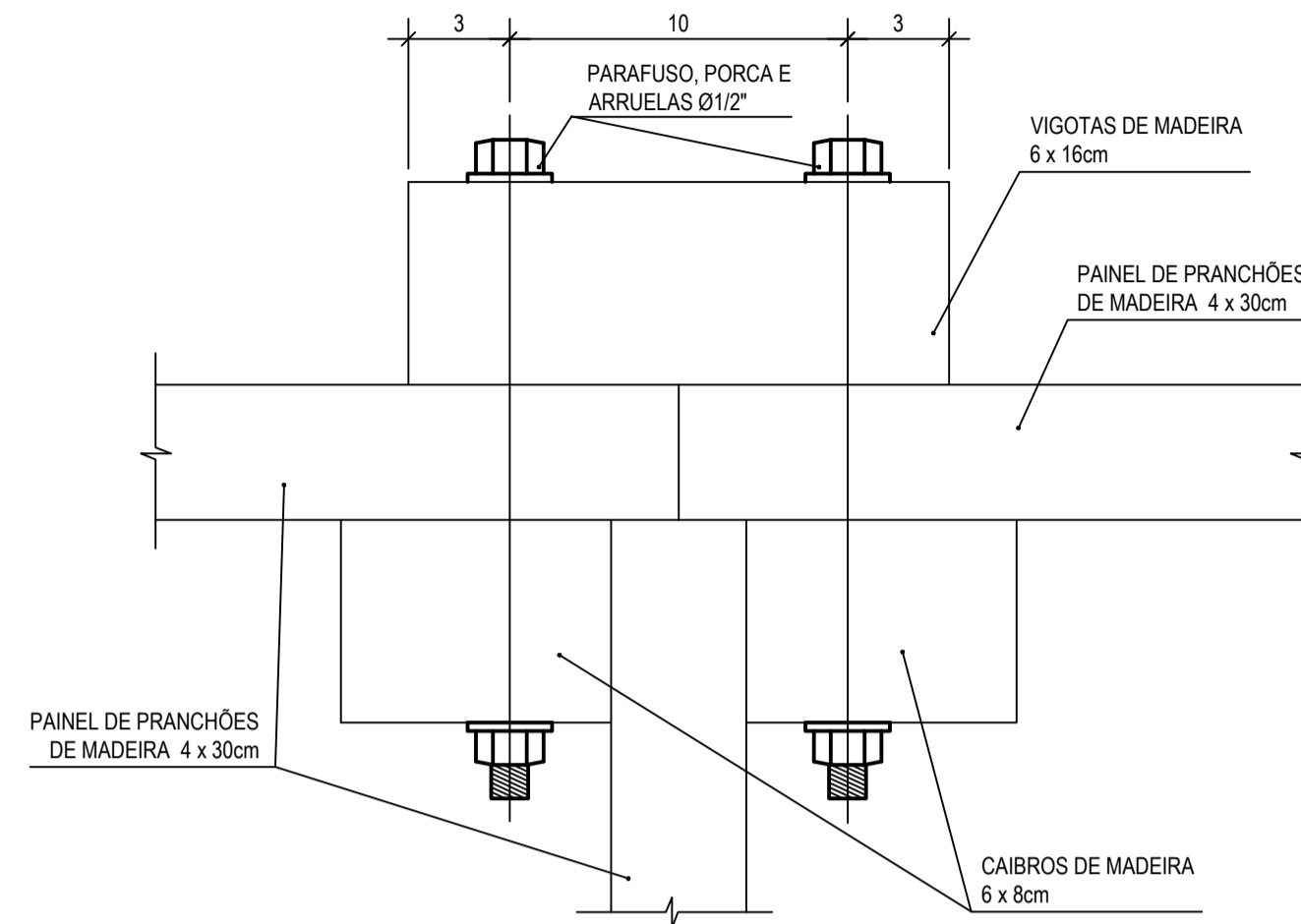
DETALHE "1"  
ESC. 1:2



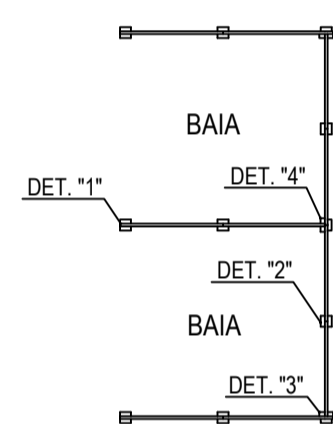
DETALHE "2"  
ESC. 1:2



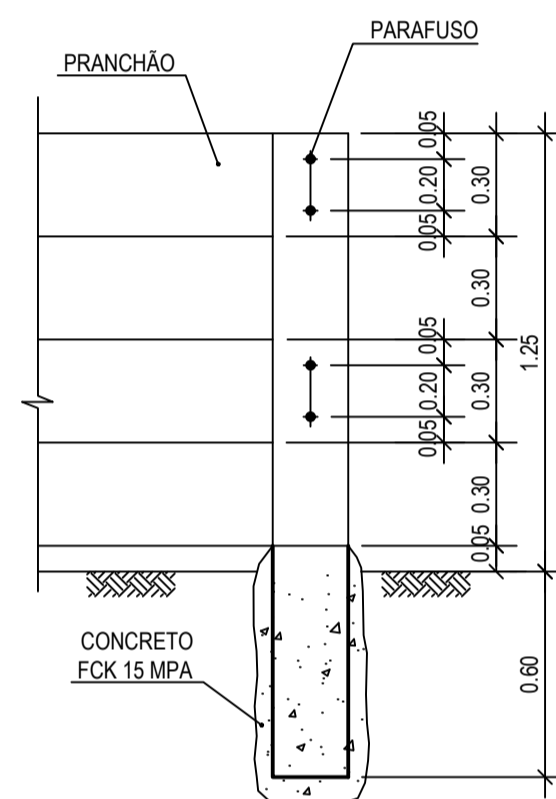
DETALHE "3"  
ESC. 1:2



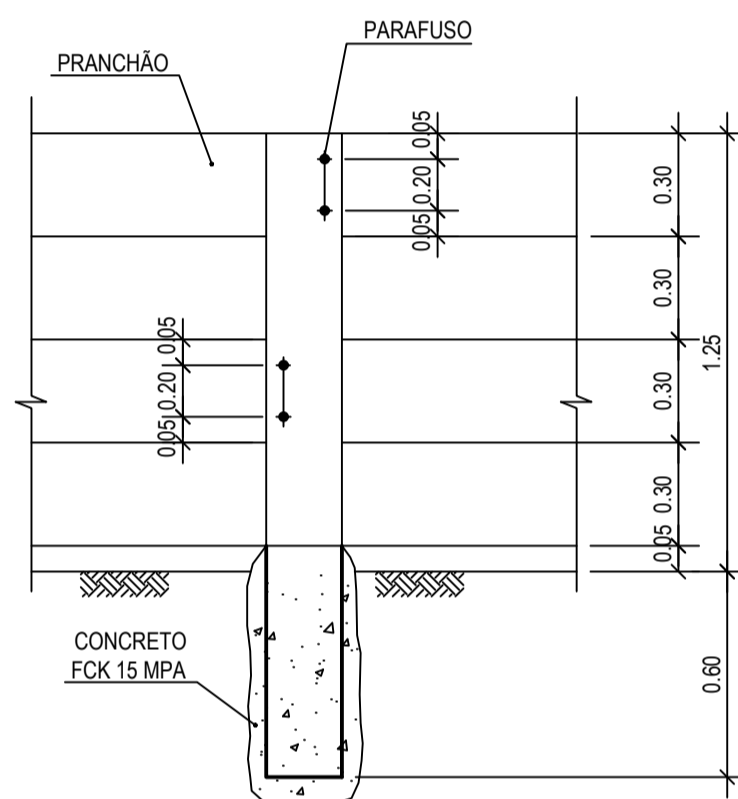
DETALHE "4"  
ESC. 1:2



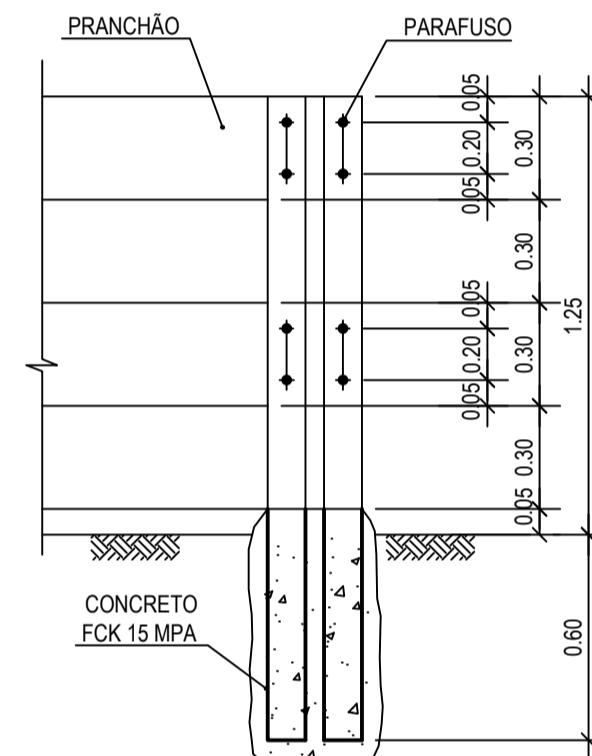
LOCALIZAÇÃO DOS DETALHE  
ESC. 1:100



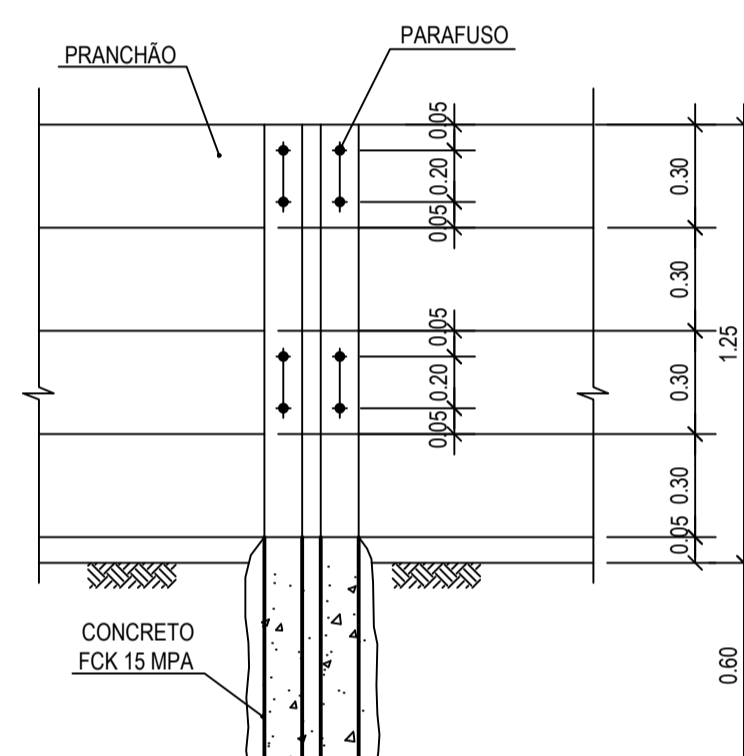
VISTA DETALHE "1"  
ESC. 1:20



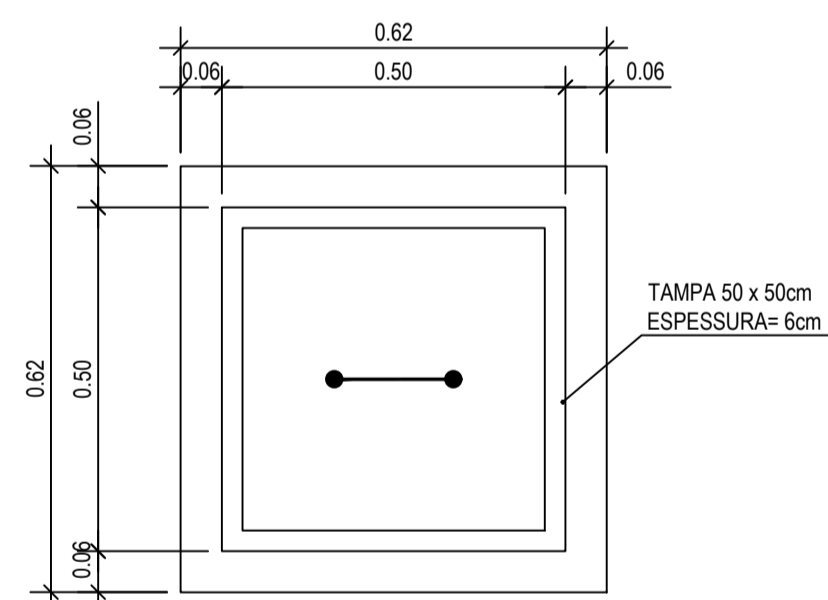
VISTA DETALHE "2"  
ESC. 1:20



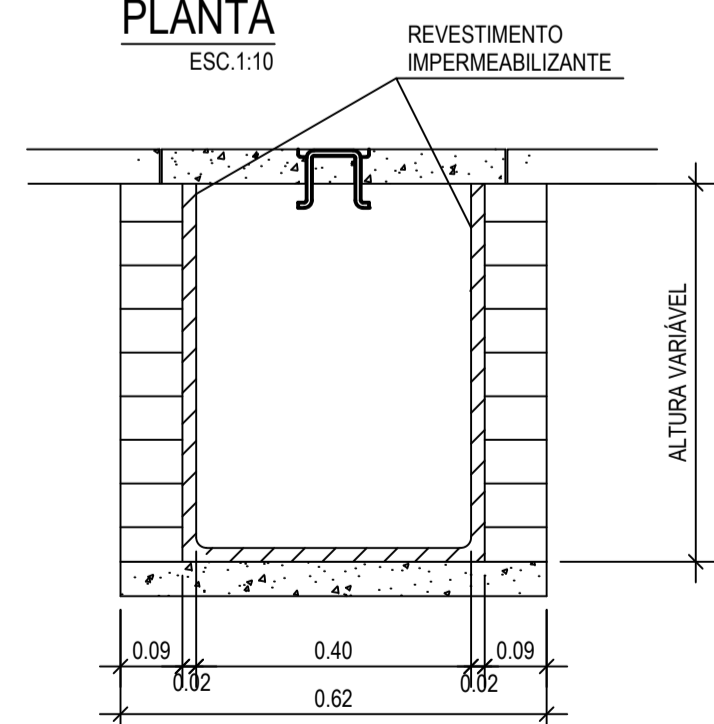
VISTA DETALHE "3"  
ESC. 1:20



VISTA DETALHE "4"  
ESC. 1:20

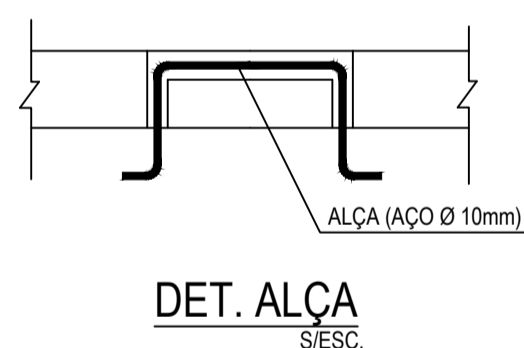


PLANTA  
ESC. 1:10

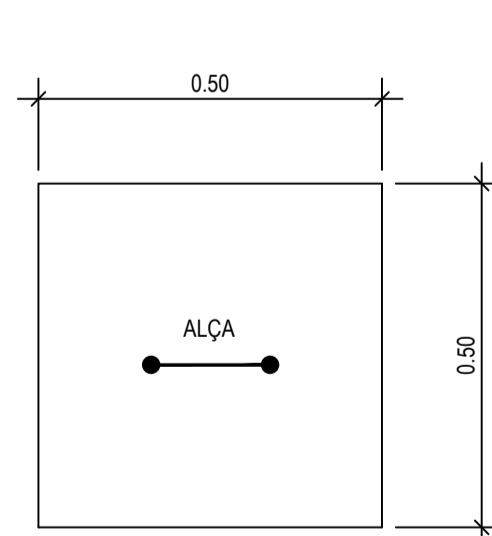
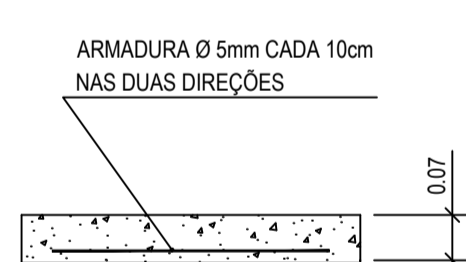


CORTE  
ESC. 1:10

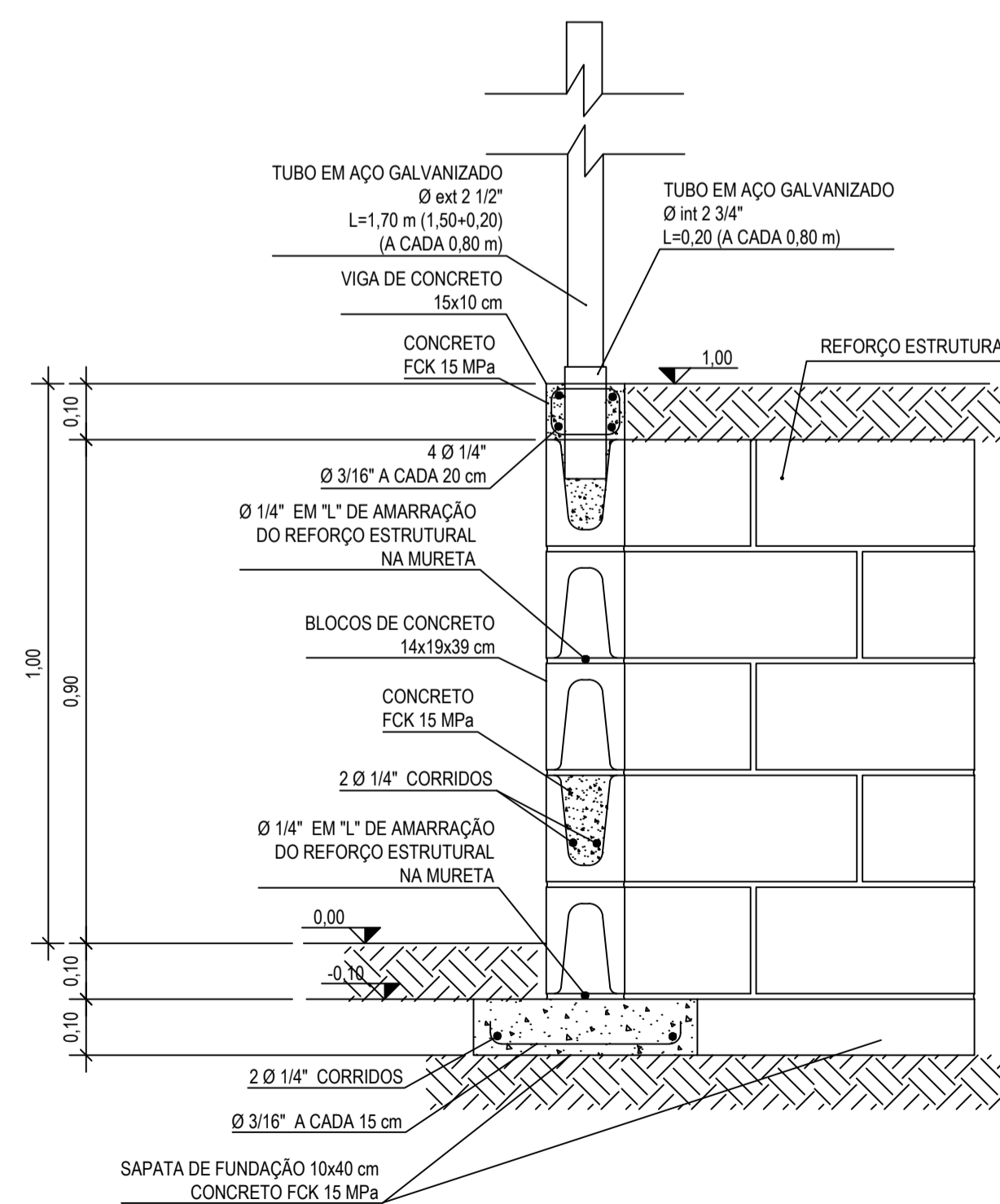
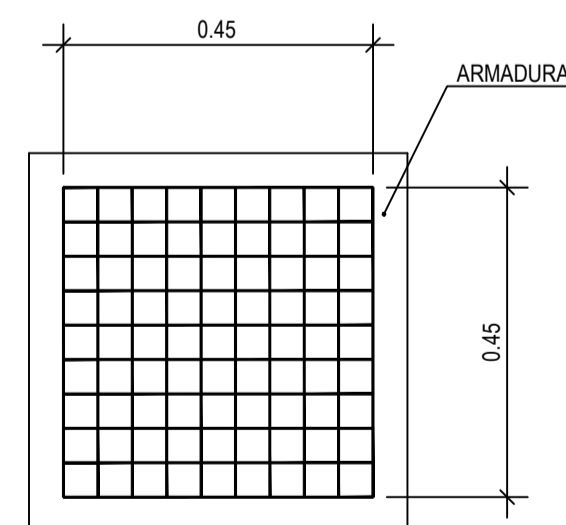
CAIXA DE INSPEÇÃO/PASSAGEM  
(REDE DE ESGOTO SANITÁRIO)



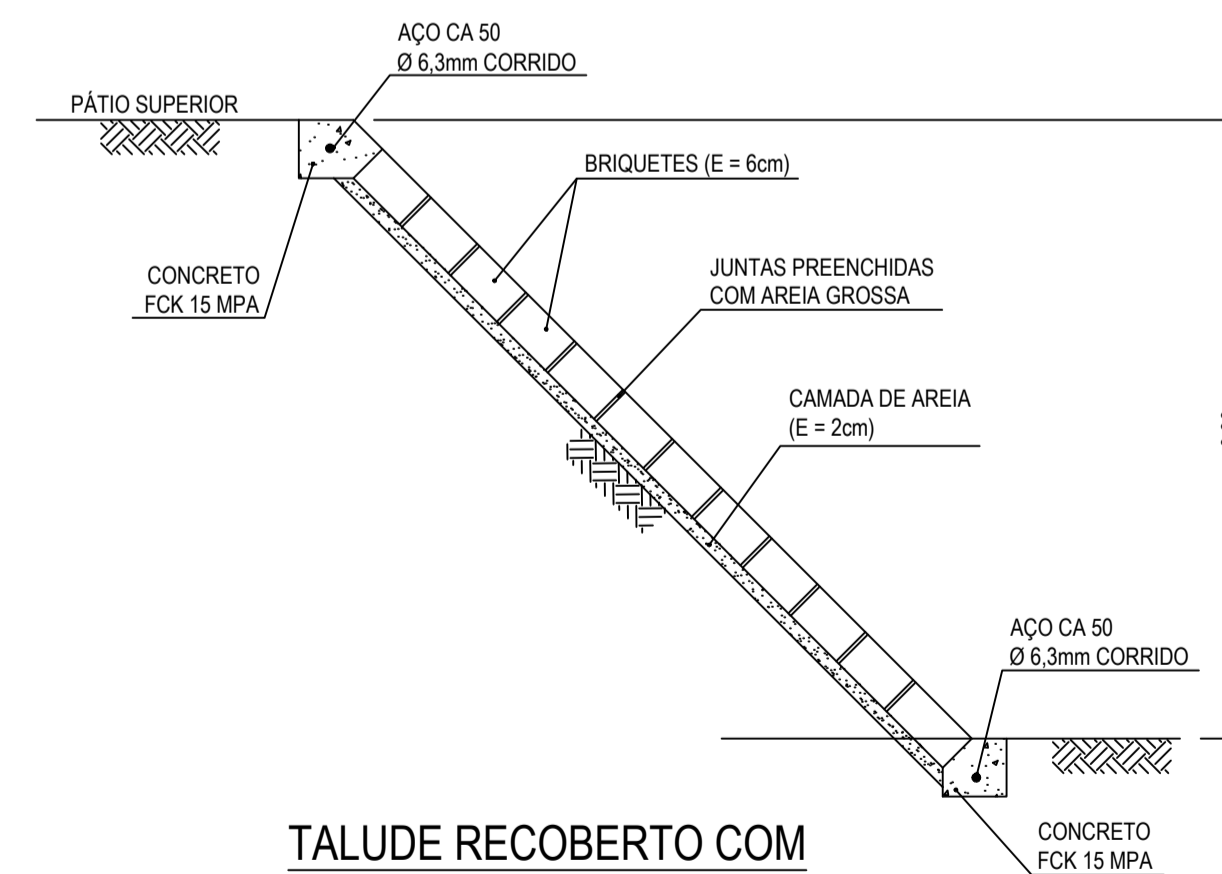
DET. ALÇA  
S/ESC.



TAMPA DA CAIXA DE INSPEÇÃO/PASSAGEM  
ESC. 1:10



CORTE "A" - DETALHE MURETA  
ESC. 1:10



TALUDE RECOBERTO COM  
BRIQUETES - DETALHE  
ESC. 1:10



GOVERNO DO DISTRITO FEDERAL

SECRETARIA DE ESTADO E INFRAESTRUTURA DE SERVIÇOS PÚBLICOS  
SERVIÇO DE LIMPEZA URBANA DO DF - SLU

PROJETO EXECUTIVO DE PONTO DE ENTREGA VOLUNTÁRIA - PEV  
BAIAS E DETALHES

03 | 06

PROJETO: VISTO: DESenhO: ZERCA: DATA: 03/06/2017  
LN: INDICADA: AGOSTO/2017